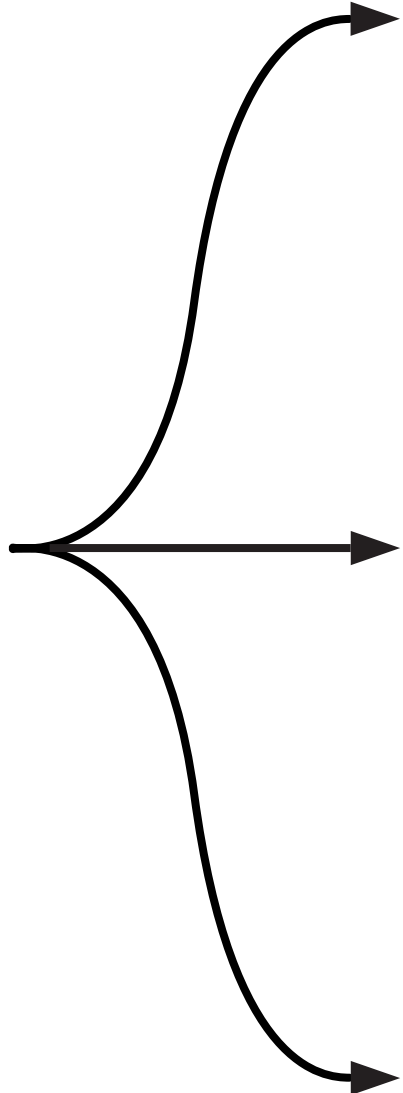


GETTING STARTED

PXI-8211

for Windows

**Please turn
to the correct
section for your
operating system**

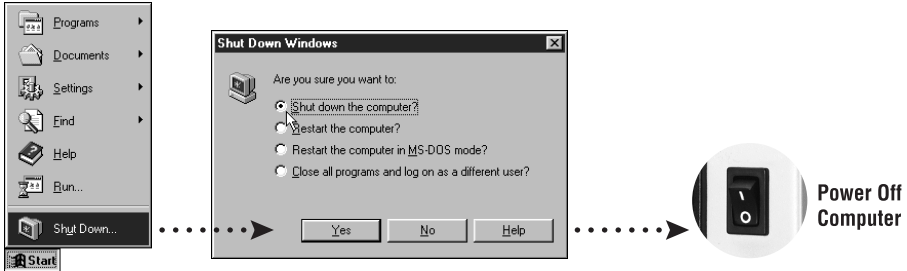


**No CD-ROM drive?
Please see back cover for
alternative installation options.**

PXI-8211 for Windows Me/98

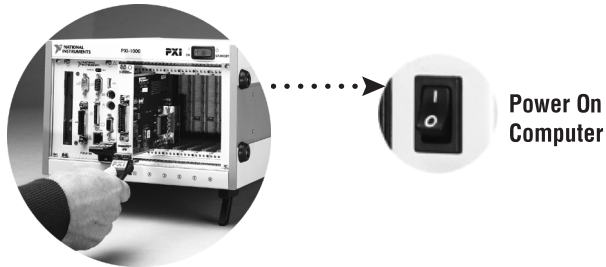
1

Shut down, then power off computer.



2

Install hardware and cables, then power on computer.



3

Install the PCI-PCI Bridge Driver.

Windows automatically detects the new hardware.

Follow the prompts in the Wizard. Select the recommended options when given a choice. If Windows asks where to search for a new driver, clear all checkboxes and click **N**ext.

4

Install the Windows Me/98 Ethernet Driver.

In most cases, Windows automatically detects the new hardware and installs the appropriate driver.

If Windows displays an **Add New Hardware Wizard** dialog box, insert the PCI/PXI Ethernet Adapters CD and follow the prompts. Choose the recommended options when given a choice. If Windows asks where to search for a new driver, make sure the box next to **CD-ROM Drive** is checked, and click **N**ext.

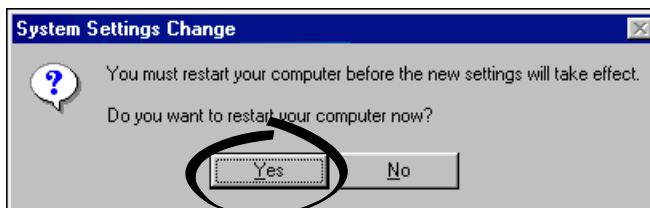
Tip: If Windows reports that it cannot locate a file on the **Intel PRO Adapter CD-ROM**, insert the PCI/PXI Ethernet Adapters CD and let Windows copy the files from the top directory of the CD-ROM (typically d:\).

Tip: If Windows reports that it cannot locate a file on the **Windows CD-ROM**, insert the Windows installation CD and let Windows copy the files from either the top directory or the directory of the CD-ROM (typically d:\ or d:\win9x\).

For Help installing your driver, refer to the *PCI/PXI Ethernet Adapters Installation Guide* (available on the PCI/PXI Ethernet Adapters CD). The installation guide also contains cabling instructions and troubleshooting tips.

5

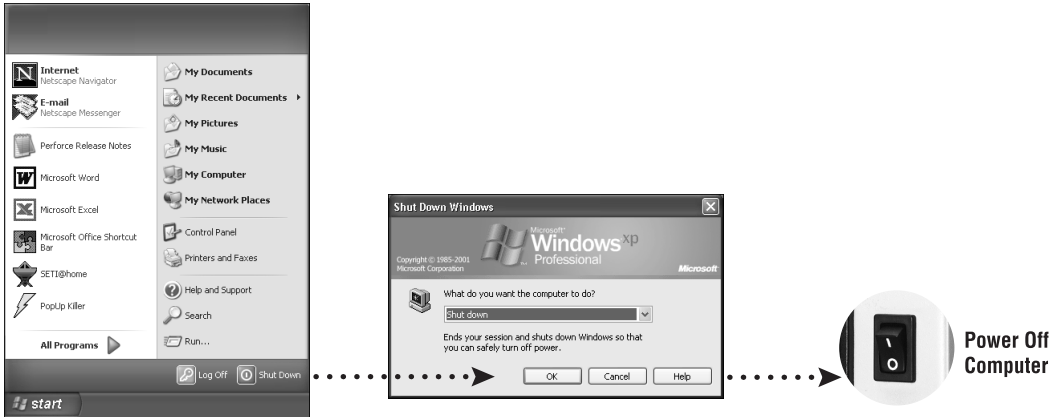
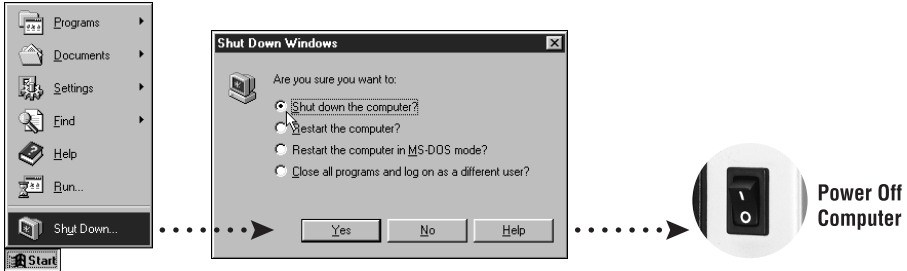
Restart computer, then connect to your network.



PXI-8211 for Windows 2000/XP

1

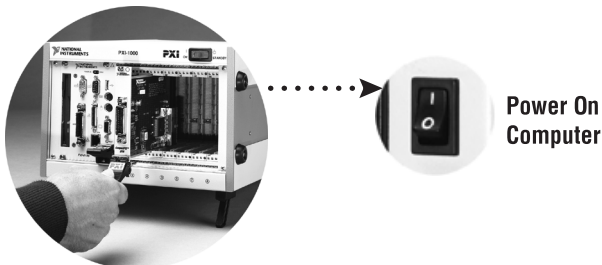
Shut down, then power off computer.



Windows 2000/XP

2

Install hardware and cables, then power on computer.

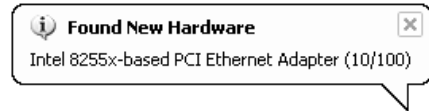
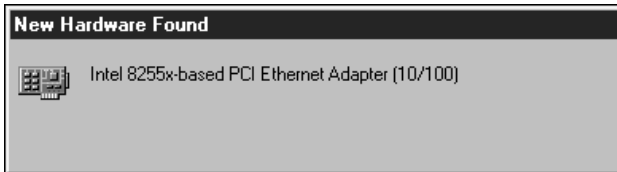


3

Install the Windows 2000/XP Ethernet Drivers.

Windows 2000/XP automatically finds the new card and installs the drivers. You also may be prompted for the original Windows 2000/XP CD.

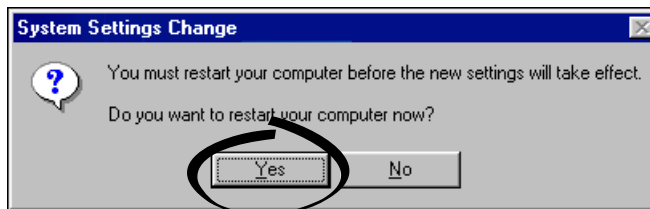
For Help installing your driver, refer to the *PCI/PXI Ethernet Adapters Installation Guide* (available on the PCI/PXI Ethernet Adapters CD). The installation guide also contains cabling instructions and troubleshooting tips.



Tip: If Windows XP displays an **Add New Hardware Wizard** dialog box, follow the prompts. Choose the **recommended** options when given a choice.

4

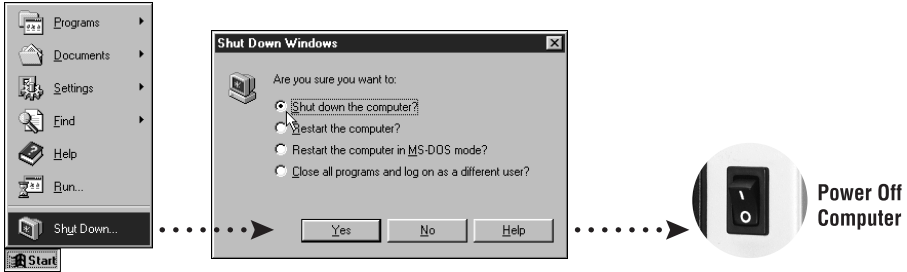
Restart computer, then connect to your network. (Windows 2000 only)



PXI-8211 for Windows NT 4.0

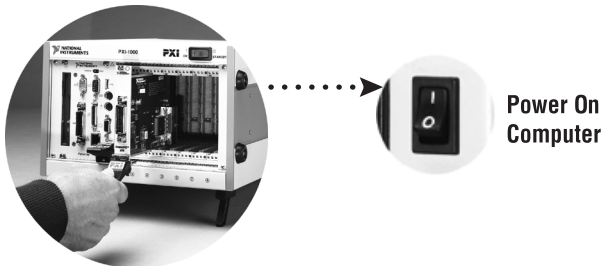
1

Shut down, then power off computer.



2

Install hardware and cables, then power on computer.

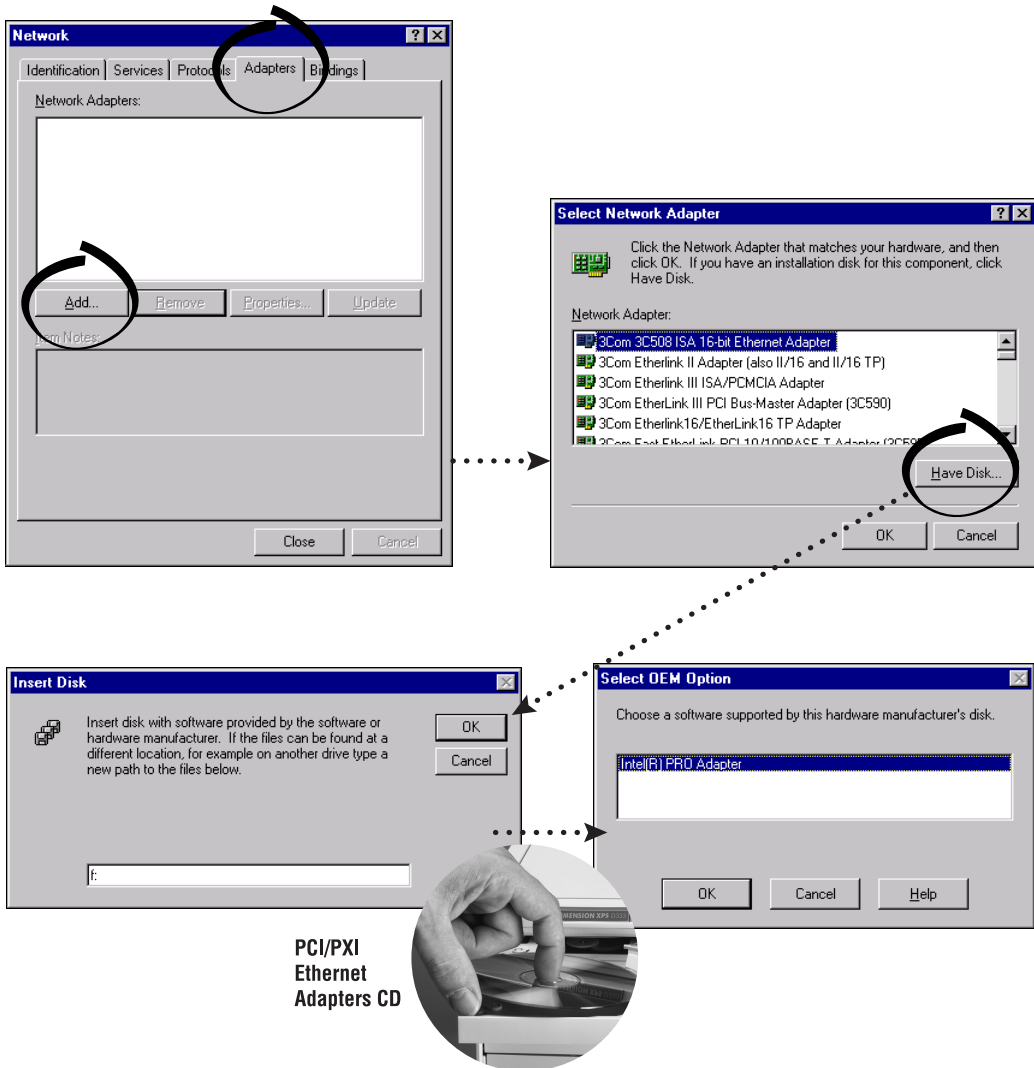


3

Install the Windows NT 4.0 Driver.

Select **Start»Settings»Control Panel»Network»Adapters** and click **Add**. Click **Have Disk** and insert the PCI/PXI Ethernet Adapters CD. You also may be prompted for the original Windows NT CD.

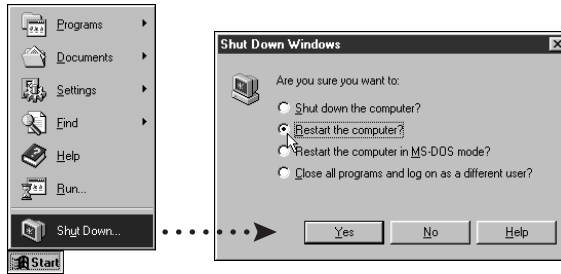
For Help installing your driver, refer to the *PCI/PXI Ethernet Adapters Installation Guide* (available on the PCI/PXI Ethernet Adapters CD). The installation guide also contains cabling instructions and troubleshooting tips.



Tip: If you are using a PXI-8170 controller, you can load the Ethernet driver from `C:\images\ethernet`.

4

Restart computer, then connect to your network.



Alternative Driver Installation Options for the PXI-8211

The installation instructions illustrated for each operating system in this document are appropriate for most users. However, if your PXI chassis does not contain a CD-ROM drive, try one of the following alternatives to load the Ethernet driver.

- If your PXI chassis contains a National Instruments PXI-8170 controller, the Ethernet driver is already loaded on the hard drive. When the installer prompts you for the location of the driver, you can select `c:\images\ethernet` instead of the CD-ROM. In fact, you may choose this option even if you do have an internal or external CD-ROM.
- If you have an existing Ethernet connection in your PXI chassis, download the Intel Ethernet driver from the National Instruments web site. Access the **Drivers and Downloads** page at ni.com/download/.
- Connect an external CD-ROM, such as a USB CD-ROM, and load the Ethernet driver directly from the PCI/PXI Ethernet Drivers CD.
- Use another computer that has a CD-ROM to copy the Ethernet driver onto a 3.5 in. floppy disk.
 1. Open a DOS command window.
 2. Change to the `\MAKEDISK` directory on the CD-ROM.
 3. Type: `MAKEDISK [operating system] [destination (optional; A: if not specified)]` where `[operating system]` is the OS family you want to use with the diskette.
 - W2K = Microsoft Windows 2000/XP
 - NT = Microsoft Windows NT
 - W9X = Microsoft Windows Me/98/95
 - NW = Novell NetWare servers and clients
 - DOS = Microsoft DOS and IBM OS/2



ni.com/support

ni.com/ask

